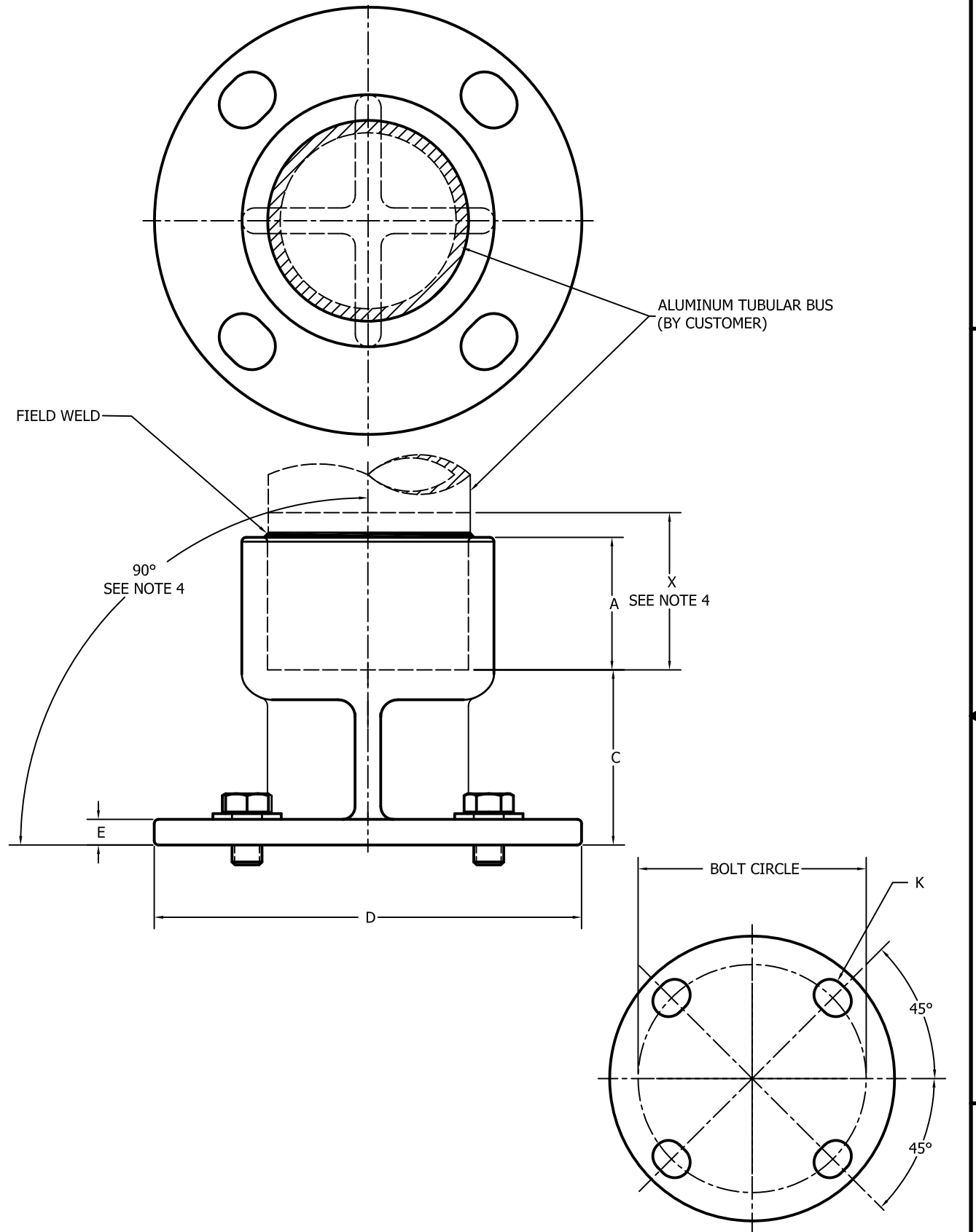


CATALOG NUMBER	BOLT CIRCLE	IPS SIZE	DIMENSION IN INCHES				
			A	C	D	E	K
WUDE-06-3	3"	3/4"	1.000	1.875	4.250	.375	.563 X .750
WUDE-10-3	3"	1"	1.000	1.875	4.250	.375	.563 X .750
WUDE-12-3	3"	1 1/4"	1.000	1.875	4.250	.375	.563 X .750
WUDE-14-3	3"	1 1/2"	1.250	2.125	4.250	.375	.563 X .750
WUDE-20-3	3"	2"	1.750	2.250	4.250	.375	.563 X .750
WUDE-24-3	3"	2 1/2"	2.000	2.500	4.250	.375	.563 X .750
WUDE-30-3	3"	3"	2.500	2.500	4.250	.438	.563 X .750
WUDE-34-3	3"	3 1/2"	2.000	2.750	4.250	.438	.563 X .750
WUDE-40-3	3"	4"	2.250	2.750	4.250	.438	.563 X .750
WUDE-50-3	3"	5"	2.500	2.750	4.250	.438	.563 X .750
WUDE-60-3	3"	6"	3.000	3.000	4.250	.438	.563 X .750
WUDE-06-5	5"	3/4"	1.000	1.875	6.250	.375	.688 X .875
WUDE-10-5	5"	1"	1.000	1.875	6.250	.375	.688 X .875
WUDE-12-5	5"	1 1/4"	1.000	1.875	6.250	.375	.688 X .875
WUDE-14-5	5"	1 1/2"	1.250	2.125	6.250	.375	.688 X .875
WUDE-20-5	5"	2"	1.750	2.250	6.250	.375	.688 X .875
WUDE-24-5	5"	2 1/2"	2.000	2.500	6.250	.375	.688 X .875
WUDE-24-5-15-IPS	5"	2 1/2"	2.000	2.500	6.250	.375	.688 X .875
WUDE-30-5	5"	3"	2.500	2.500	6.250	.438	.688 X .875
WUDE-34-5	5"	3 1/2"	2.000	2.750	6.250	.438	.688 X .875
WUDE-40-5	5"	4"	2.250	2.750	6.250	.438	.688 X .875
WUDE-50-5	5"	5"	2.500	2.750	6.250	.438	.688 X .875
WUDE-60-5	5"	6"	3.000	3.000	6.250	.438	.688 X .875
WUDE-40-7	7"	4"	2.250	2.750	8.500	.500	.813 X 1.000
WUDE-50-7	7"	5"	2.500	2.750	8.500	.438	.813 X 1.000
WUDE-60-7	7"	6"	3.000	3.000	8.500	.500	.813 X 1.000

NOTES:

1. MATERIAL: 356-T6 ALUMINUM ALLOY.
2. SUPPLIED WITH CAP SCREWS FOR UPRIGHT MOUNTING. FOR BASE MOUNTING, ADD SUFFIX "B" TO CATALOG NO. EXAMPLE: WUDE-06-3-B
3. CANTILEVER STRENGTH 3" B.C. 2000 LBS. "5" B.C. 4000 LBS.
4. ITEMS WITH "IPS" SUFFIX WILL BE FURNISHED WITH SHORT LENGTH OF ALUM. TUBE (A.E.C) SHOP WELDED INTO BODY AT 90° TO BASE. "X" LENGTH OF TUBE TO BE SPECIFIED BY CUSTOMER AND INSERTED BEFORE " I.P.S " SUFFIX IN CAT. NO. EXAMPLE -FOR 15" LONG PIECE OF TUBING THE CAT.NO. WOULD BE - WUDE-24-5-15-IPS



70093	06/13/2017	RK	HG	HPS	HUBBELL® POWER SYSTEMS						
EC #	DATE	CHG BY	RESP ENG		TITLE WELDED VERTICAL SUPPORT						
DESC OF DWG: PRODUCTION DRAWING CREACTION IN AUTOCAD				CONFIDENTIAL: THIS DRAWING AND ITS CONTACTS ARE CONFIDENTIAL AND THE EXCLUSIVE PROPERTY OF HUBBELL POWER SYSTEMS. NO PUBLICATION, DISTRIBUTION OR COPIES MAY BE MADE WITHOUT THE WRITTEN CONSENT OF HUBBELL POWER SYSTEMS. HUBBELL POWER SYSTEMS UNPUBLISHED ALL RIGHTS RESERVED UNDER THE COPYRIGHT LAWS				SIZE C	DWG NO. C-5509	CAT / PART / ASSY NO. WUDE-(SEE TABLE)	REV 14
REASON (S) FOR CHANGE: DISPOSITION OF MAT'L:				DO NOT SCALE THIS DRAWING	DRN BY JAF	DATE 3-17-60	SHEET 1 OF 1				